



## QuickScan® Bladder Ultrasound

Open Architecture • Precise • Portable Bladder Scan

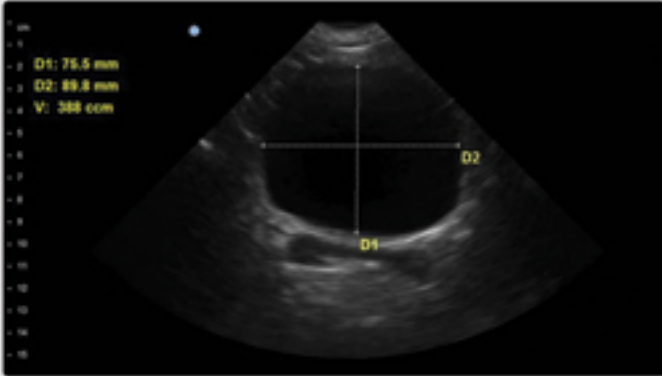
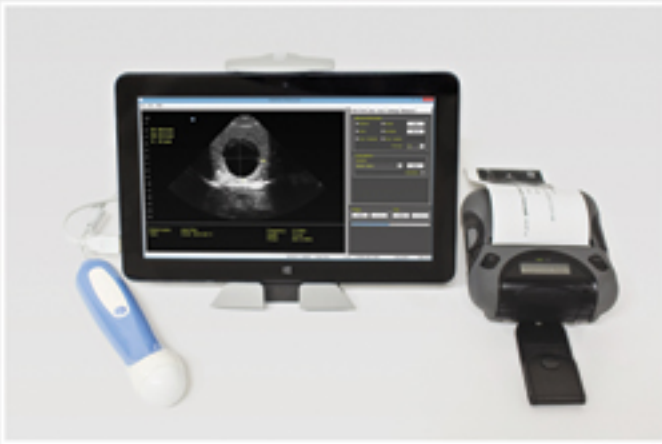
# AT THE CLICK OF A BUTTON.



Automatic Calculations  
of Bladder Volume and  
Post Void Residual

\*Point of Care Cart Optional

# QuickScan® Bladder Ultrasound



## FEATURES:

- Open Architecture Tablet Touch Screen Computer with 9" High Resolution Color Screen
- Mobile Thermal Printer
- Line Power or Rechargeable Batteries
- Document Storage with Images
- Automatic and Accurate Calculations of Bladder Volume
- Frequencies and Depths for Adults and Pediatrics
- Real Time Images for Precise Location
- Handheld Probe with Button for Instant Image and Save
- No Calibration Required
- **Optional Point of Care Cart** with Locking Wheels and Hydraulic Height Adjustment

## DETECT & DIAGNOSE:

- Post Void Residual
- Post-Operative Urinary Retention

## PREVENT & MANAGE:

- Unnecessary Catheterization and Accompanying Patient Trauma
- Catheter Associated Urinary Tract Infections
- Incomplete Bladder Emptying and Incontinent Episodes
- Voiding Schedules and Bladder Retraining
- Post-Operative Recovery
- Hospital Costs and Staff Time

## ORDERING INFORMATION:

Item #	Description
QSBU-T	QuickScan® Bladder Ultrasound
UG	.25 Liter Tube of Ultrasound Gel
37964050	TRF-80T3 Paper for Mobile Printer (10 Rolls Per Case)
PPOC-QS	Point of Care Cart for QuickScan® Bladder Ultrasound
39569131	Extra Battery Pack for Mobile Printer
39569160	Battery Charger (1 Bay Cradle) for Mobile Printer
39569180	4 Unit Battery Charger for Mobile Printer
39569360	Car Charger for Mobile Printer

## QUICKSCAN® BLADDER ULTRASOUND SYSTEM PACKAGE INCLUDES (PART # QSBU-T):

- (1) QuickScan® Bladder Ultrasound Software Program
- (1) Touchscreen Tablet Computer
- (1) Mobile Printer with 1 Roll of Thermal Paper
- (1) Mobile Printer Belt Clip
- (1) Bladder Ultrasound Probe with USB Cable
- (1) .25 Liter Tube of Ultrasound Gel (UG)
- (1) QuickScan® Bladder Ultrasound Operator's Guide
- (1) Mobile Printer Hardware Manual
- (1) Touchscreen Tablet Computer Guide
- (1) Touchscreen Stylus
- (1) Touchscreen Tablet Computer Cradle
- (1) System Carry Bag (PBAG)

## TECHNICAL SPECIFICATIONS:

- Patient Data Storage:** >500 Patient Records
- Power:** Line power or 32 Whr Rechargeable Battery providing 8-10 hours of use.
- Display:** 9" Color Touch Screen Tablet; 1920 X 1080 Resolution
- Total Weight:** < 2 lbs.
- Patient Types :** Adults: 3.5 Mhz; Pediatrics: 5.0 Mhz
- Mode:** 2D or 3D Sector Scan; B-Mode
- Bladder Volume Range & Accuracy:** 0-1800 cc; ±10%, ±10 cc
- ISPTA:** 94 mW/CM<sup>2</sup> (Maximum)
- ISPPA Range:** 0 – 68 mW/cm<sup>2</sup>
- Mechanical Index:** 1.9 (Maximum)
- Transducer Diameter:** 17 mm (0.67")
- Transducer Resonant Frequency:** 3.5 Mhz
- Transducer Bandwidth:** Over 60%
- Warranty Tablet & Ultrasound Probe:** 1 Year Parts and Labor
- Quality Standard:** ISO 13485: 2003



Scan here to learn what The Prometheus Group® can do for you.

Contact us today for more information or to schedule a demonstration  
[info@theprogrp.com](mailto:info@theprogrp.com) | [www.theprogrp.com](http://www.theprogrp.com) | 1-800-442-2325