

Uroflowmetry Product Suite

Uroflowmetry Systems Developed to Accurately and Efficiently Perform Voiding Studies



WiFLOW[®]

Morpheus[®] Uroflowmetry

Pathway[®] NMR 200U

* Cart Optional

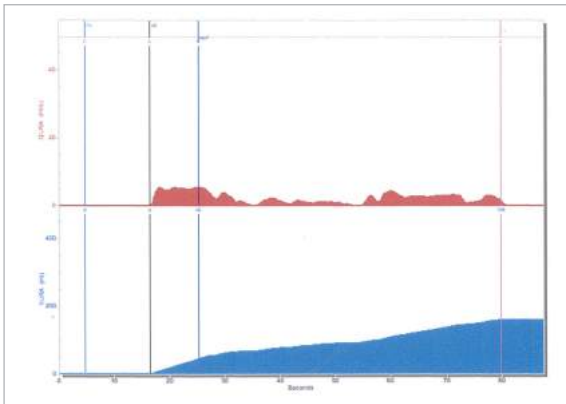
WiFLOW®

For Simplified Flow/Volume Studies



The WiFLOW® System Includes:

- Touchscreen Tablet Computer
- Wireless Mouse
- Wireless Color Printer
- USB Serial Interface Cable
- Uroflowmetry Load Cell
- 2000ml Pitcher (ML)
- Uroflowmetry Funnel (UFN)
- WiFLOW® Uroflowmetry CD Software Program
- WiFLOW® Uroflowmetry Operator's Guide



WiFLOW® Intermittent Flow Pattern

WiFLOW® provides sleek and wireless uroflowmetry. Perform quick and streamlined uroflow studies.

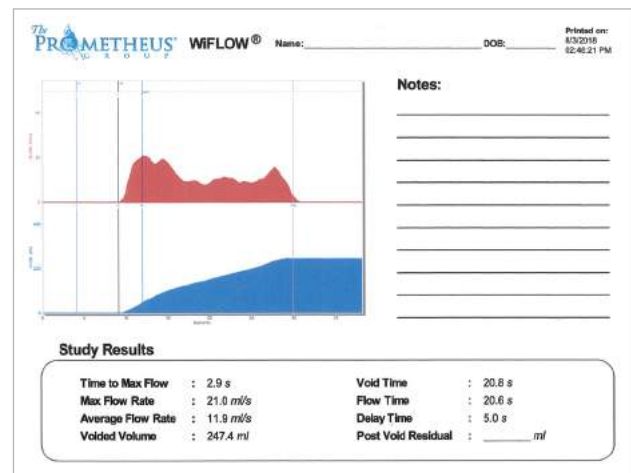
✓ **AFFORDABLE**
Easy and Convenient Low Cost Option for Uroflowmetry Studies.

✓ **ACCELERATE PROCEDURES**
Records Automatically When the Patient Begins to Void. Perfect for Busy Practice Schedules.

✓ **ACCURATE**
Automatic Void Delay Data, Void Begin/End with Automatic Artifact Removal, Automatic Marker Placement, and Auto-Calibration.

✓ **VERSATILE**
The Uroflowmetry Load Cell is Battery Operated or Line Powered, Wireless or USB, Providing Maximum Flexibility, Mobility, and Privacy for the Patient.

✓ **FULL COLOR REPORTS**
The WiFLOW® Tablet is Configured to Work with the Printer for Real-Time, High Quality, Color Report Printing.



WiFLOW® Report with Study Results

Morpheus® Uroflowmetry

Seamlessly Advance From Study to Review



The Morpheus® Uroflowmetry System Includes:

- Notebook Computer
- Wireless Color Printer
- USB Serial Interface Cable
- Uroflowmetry Load Cell
- 2000ml Pitcher (ML)
- Uroflowmetry Funnel (UFN)
- Morpheus® Uroflowmetry CD Software Program
- Morpheus® Uroflowmetry Operator's Guide



Morpheus® Uroflowmetry provides a wireless uroflowmetry system that is versatile with secure patient database storage, and network capability.

✓ INTUITIVE NAVIGATION

The User Friendly Interface Makes For a Seamless Software Navigation Experience.

✓ EMR NETWORK COMPATIBLE

Morpheus® Can Be Linked to the Electronic Medical Records Network for the Export of Patient Data.

✓ HIPAA COMPLIANT

Password Protection, Unique Patient Identifiers, and Database Management.

✓ VERSATILE

The Uroflowmetry Load Cell is Battery Operated or Line Powered, Wireless or USB, Providing Maximum Flexibility, Mobility, and Privacy for the Patient.

✓ ACCURATE

Automatic Void Delay Data, Void Begin/End with Automatic Artifact Removal, Automatic Marker Placement, and Auto-Calibration.

✓ FULL COLOR REPORTS

The Morpheus® Notebook is Configured to Work with the Printer for Real-Time, High Quality, Color Report Printing.

✓ COMPREHENSIVE

Statistical and Nomogram Analytics.

Pathway® NMR 200U

Fully Customizable for Advanced Uroflowmetry Studies

One Pathway® NMR 200U Module Providing One Channel of External Pelvic Muscle EMG, One Channel of Accessory Muscle EMG, One Channel of Uroflowmetry Volume and One Channel of Uroflowmetry Rate

✓ **PORTABLE**
Wireless, Wearable, Two Channel EMG Module.

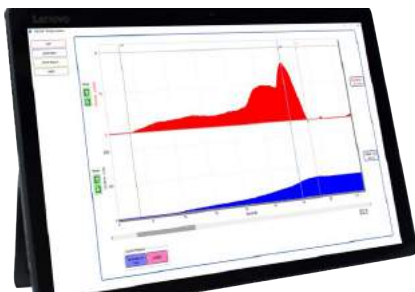
✓ **EMR NETWORK COMPATIBLE**
Pathway® NMR 200U Can Be Linked to the Electronic Medical Records Network for the Export of Patient Data.

✓ **HIPAA COMPLIANT**
Password Protection, Unique Patient Identifiers, and Database Management.

✓ **VERSATILE**
The Uroflowmetry Load Cell is Battery Operated or Line Powered, Wireless or USB, Providing Maximum Flexibility, Mobility, and Privacy for the Patient.

✓ **ACCURATE**
Automatic Void Delay Data, Void Begin/End with Automatic Artifact Removal, Automatic Marker Placement, and Auto-Calibration.

✓ **PROTOCOL DRIVEN**
Selectable Drop Down List Includes:
Two EMGs with Flow/Volume
One EMG with Flow/Volume
Flow/Volume





Pathway® NMR 200U adds two channel EMG capability to observe pelvic and accessory muscle function during micturition.

The Pathway® NMR 200U system includes:

- Notebook Computer
- Wireless Color Printer
- Power Supply
- USB Serial Interface Cables
- Uroflowmetry Load Cell
- 2000ml Pitcher (ML)
- Uroflowmetry Funnel (UFN)
- Pathway® NMR 200U Uroflowmetry CD
- Pathway® NMR 200U Operator's Guide

✓ COMPREHENSIVE
Statistical and Nomogram Analytics.
Includes EMG Lag Time Calculations.

✓ FULL COLOR REPORTS
The Pathway® NMR 200U is Configured to Work with the Printer for Real-Time, High Quality, Color Report Printing.

✓ EXPANDABLE
Upgrade the functionality of your Pathway® NMR 200U to the Pathway® NMR 200UB.

Featuring:

- Wireless, Two Channel EMG for Pelvic Floor Rehabilitation
- Extended HDMI Monitor with Gaming Displays



*** Upgrade to the Pathway® NMR 200UB**



Accessories, Consumables & Optional Equipment

Uroflowmetry Funnel
Part: UFN



2000ml Pitcher
Part: ML



System Carry Bag
Part: PBAG



Commode
Part: CM

Uroflowmetry Stand
Part: US



Pathway® Vaginal Emg/Stimulation Sensor Part: 6330



Pathway® Rectal Emg/Stimulation Sensor Part: 6340



Pathway® Electrodes Part: 6750
BAG OF 100 (RECTANGULAR, 3 SNAPS IN A ROW STYLE),
Use with PATHWAY® EMG Systems



Easytrode Pregelled Electrodes Part: 6801
BAG OF 150 (SQUARE, INDIVIDUAL SNAP STYLE),
Use with 24" Electrode Lead Wire set or
6' Electrode Lead Wire Set



Disposable Lead Wire Electrodes Part: 7400
(Bag of 75/25 Patients), (SQUARE ELECTRODE, 24" LEAD WIRE,
.060 FEMALE PIN)



Adapter for 7400 Disposable Lead Wire Electrodes Part: 7100



24" Electrode Lead Wire Set Part: 5328
Use with Easytrode Pregelled Electrodes



(2) Ch B Extended Pathway® Preamplifier Part: 2583
Use with PATHWAY® EMG Systems



Pathway® Adapter Part: 3660
Use with PATHWAY® NMR, MR, and TR Series to Connect
Sensors or Lead Wire Sets

Shipping & Returns

To Place an Order:

Call Customer Service toll free at **1.800.442.2325** or Fax 1.603.749.0511
Customer Service Representatives are happy to assist with processing your order or answering your questions, Monday - Friday, 9am - 5pm EST.

Payment Terms:

NET 30 Terms are available for established accounts. All major credit cards are accepted.

Shipping:

(F.O.B.) shipping point. Please allow five (5) days for delivery. Rush (air freight) orders are shipped F.O.B. shipping point.

Credit & Returns:

Equipment may be returned within 30 days from the invoice date.
(Subject to a 20% restocking fee).

Accessories that are unopened, undamaged, and unmarked may be returned for full credit within 30 days from the invoice date.

Please call Customer Service for a RMA# prior to returning the product and be sure the RMA# is clearly visible on the outside of the package.

Customer Care Support

Have a question about your equipment or need technical assistance?

Call our Technical Support Team toll free at **1.800.272.8492**
Monday - Friday, 9am - 5pm EST.

Or email us at info@theprogrp.com

Uroflowmetry Product Suite

Uroflowmetry Product Suite Comparison Chart

Specifications	WiFLOW®	Morpheus® Uroflowmetry	Pathway® NMR 200U
Notebook PC		✓	✓
Tablet Computer	✓		
Wireless Color Printer	✓	✓	✓
USB or Wireless Communication	✓	✓	✓
Auto Void Begin/Auto Void End	✓	✓	✓
Void Delay Calculations	✓	✓	✓
EMG Lag Time Calculations			✓
Automatic Artifact Removal	✓	✓	✓
Auto Marker Placement	✓	✓	✓
High Accuracy Uroflowmeter at Minimum Flow Rates	✓	✓	✓
Auto-Calibration	✓	✓	✓
Two Channel EMG			✓
Patient Database		✓	✓
EMR Capable		✓	✓
Expandable to Biofeedback			✓
Nomogram Analytics		✓	✓
Portable	✓	✓	✓

Morpheus® Complex Urodynamics System Featured

With additional options for:
Pelvic Floor Rehabilitation, Anorectal
Manometry with Paradoxical EMG, and
Multi-Compartment Pelvic Floor
Ultrasound Imaging, all on one platform.



LET'S GROW YOUR PRACTICE TOGETHER.



ISO 13485 CERTIFIED • ©The Prometheus Group®. All rights reserved. MKT-012
URL/UROGYN

Contact us today for more information.
One Washington Street, Suite 3171, Dover NH, 03820
info@theprogrp.com | www.theprogrp.com | 1-800-442-2325