

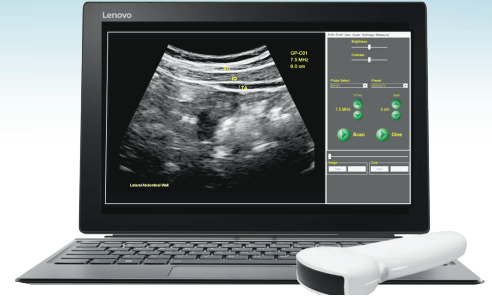
# Training and Support

# ECHOGEN

echogenportal.com

VISION BEYOND YOUR FINGERTIPS

24/7  
TRAINING  
PORTAL



## For the Pathway® Ultrasound Imaging System for Lumbopelvic Rehabilitation

The EchoGen Portal is brought to you by:



Access code  
included  
with your  
purchase

**Ramona C. Horton PT, MPT, DPT**

Pelvic Health Physical Therapist  
and Educator



**Join the EchoGen Ultrasound  
Discussion Board on Facebook**

Share your own findings or see what your  
peers are talking about and sharing in this  
online discussion group (@EchoGenPortal).

\* Comprehensive Instructional Video Library

\* Extensive Image Library

\* Ongoing Webinars & Courses

\* Outstanding Technical Support, Training,  
and One on One Interactive Zoom Support

## EGP Seminars

Interactive, remote learning and hands-on satellite course options available!

- *Course credit/contact hours provided following post test*
- *Convenient registration through the EchoGen Portal (echogenportal.com)*

### *Pre-Recorded and Live, Interactive, Remote Zoom Webinars*

For those who wish to participate from the comfort of their own office or clinic.

Remote participants do not require a partner or small group to attend. The instructor will be presenting live via Zoom. Zoom webinars are a mixture of instructional lecture and live model demonstrations.

### *Course discounts available!*

Pathway® Ultrasound Imaging System customers will receive a 10% discount. In order to receive the discount code, you must log in to your EchoGen Portal account.

### *Satellite Lab Courses*

(Several locations to choose from)

For those who wish to participate in an in-person, hands-on learning lab environment.

Participants will meet in small groups face-to-face with teaching assistants for the entirety of the course and experience lecture and hands-on techniques (labs). The instructor will be presenting live via Zoom from an off-site location.

**The Prometheus Group® One Washington Street, Suite 3171, Dover NH, 03820**  
**info@theprogrp.com | theprogrp.com | 1-800-442-2325**

MKT-035 Rev. B.

# Recommended Supplies:



**Ultrasound Gel, .25 liter**  
Part: UG

Available through The Prometheus Group®



## Sani-Cloth

Germicidal Disposable Wipe  
AF3, Large Wipe (For cleaning)

### Manufactured By:

Professional Disposables  
International, Inc.

Find it Online At:

[www.pdihc.com](http://www.pdihc.com)

[www.amazon.com](http://www.amazon.com)



## Aquaflex

Ultrasound Gel Pad (2cm x 9cm)  
REF 04-02

### Manufactured By:

Parker Laboratories, Inc.

Find it Online At:

[www.parkerlabs.com](http://www.parkerlabs.com)

[www.amazon.com](http://www.amazon.com)



## Sheathes Probe Covers

for Curvilinear Array  
#80501 Non Latex Covers

### Manufactured By:

Sheathing Technologies

Find it Online At:

[www.sheathes.com](http://www.sheathes.com)